
Installing rails for H600S series storage nodes

You must install the slide rails that were shipped to you before you install the H600S series storage nodes.

Before you begin

- You have received the box containing the rails and screws.
- You have a screwdriver.
- You have sufficient personnel to install the nodes into the rack.

About this task

Each rail kit includes a pair of slide rails and screws. The left rail is labeled L and the right rail is labeled R. Each rail consists of an outer, mid, and inner part. As part of the installation, you slide the inner rail out, and attach it to the side of the node. After you install the rails in the rack, you can install the nodes.

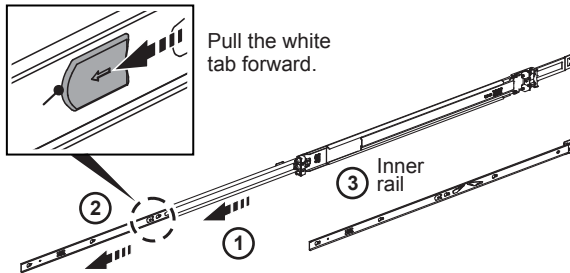
Consider the following best practices when you install the nodes in the rack:

- Ensure that you have installed the rack according to the safety instructions from the manufacturer.
- Ensure that the rack is stabilized.
The heaviest equipment should be at the bottom of the rack.
- Follow proper grounding practices to avoid the risk of electric shock.
- Follow proper airflow and cooling requirements to prevent the hardware from overheating.

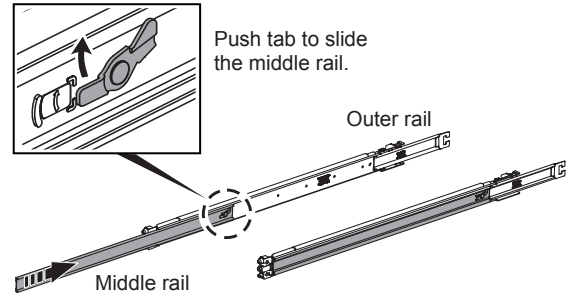
Steps

- Before installing the node, install the rails as shown in the following illustrations:

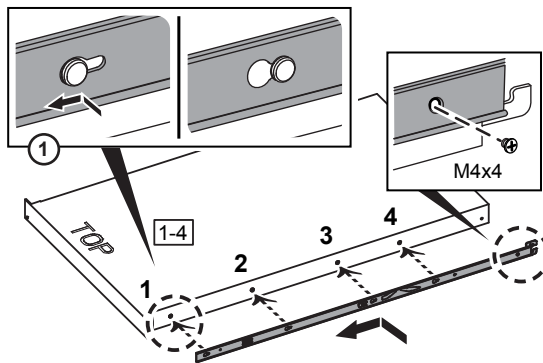
- Slide the inner rail out.
The middle rail extends with it.
Repeat for other side of the rail.



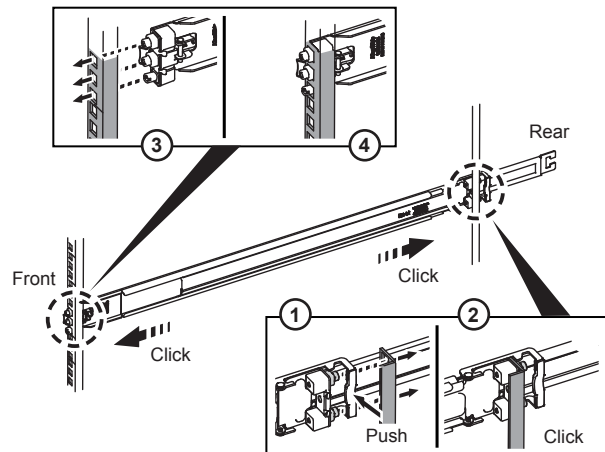
- Push the extended middle rail back in.
Repeat for other side of the rail.



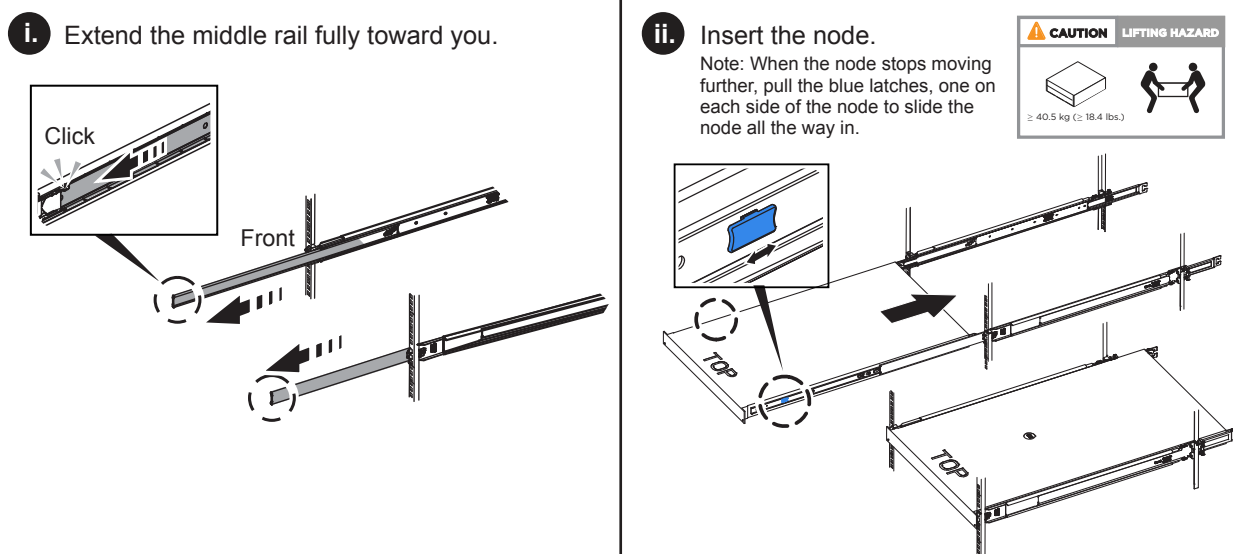
- Attach both inner rails (L and R) to either side of the node, and secure the rails with the screws provided in the box.
Repeat for other side of the rail.



- Attach outer rail to the rack.
Repeat for other side of the rail.



2. Install the node in the rack as shown in the following illustrations:



Contacting NetApp Support

If you need help with or have questions or comments about NetApp products, contact NetApp Support.

- Web: mysupport.netapp.com
- Phone:
 - 888.4.NETAPP (888.463.8277) (US and Canada)
 - 00.800.44.638277 (EMEA/Europe)
 - +800.800.80.800 (Asia/Pacific)

Where to find additional information

You can learn more about using and managing SolidFire storage systems in NetApp's documentation library.

[NetApp Element Software Documentation Library](#)

Includes documentation for various releases of Element software.

[NetApp SolidFire Resources page](#)

Provides resources about SolidFire, including links to video content and technical reports.

Copyright information

Copyright © 2018 NetApp, Inc. All rights reserved. Printed in the U.S.

No part of this document covered by copyright may be reproduced in any form or by any means—graphic, electronic, or mechanical, including photocopying, recording, taping, or storage in an electronic retrieval system—without prior written permission of the copyright owner.

Software derived from copyrighted NetApp material is subject to the following license and disclaimer:

THIS SOFTWARE IS PROVIDED BY NETAPP "AS IS" AND WITHOUT ANY EXPRESS OR IMPLIED WARRANTIES, INCLUDING, BUT NOT LIMITED TO, THE IMPLIED WARRANTIES OF MERCHANTABILITY AND FITNESS FOR A PARTICULAR PURPOSE, WHICH ARE HEREBY DISCLAIMED. IN NO EVENT SHALL NETAPP BE LIABLE FOR ANY DIRECT, INDIRECT, INCIDENTAL, SPECIAL, EXEMPLARY, OR CONSEQUENTIAL DAMAGES (INCLUDING, BUT NOT LIMITED TO, PROCUREMENT OF SUBSTITUTE GOODS OR SERVICES; LOSS OF USE, DATA, OR PROFITS; OR BUSINESS INTERRUPTION) HOWEVER CAUSED AND ON ANY THEORY OF LIABILITY, WHETHER IN CONTRACT, STRICT LIABILITY, OR TORT (INCLUDING NEGLIGENCE OR OTHERWISE) ARISING IN ANY WAY OUT OF THE USE OF THIS SOFTWARE, EVEN IF ADVISED OF THE POSSIBILITY OF SUCH DAMAGE.

NetApp reserves the right to change any products described herein at any time, and without notice. NetApp assumes no responsibility or liability arising from the use of products described herein, except as expressly agreed to in writing by NetApp. The use or purchase of this product does not convey a license under any patent rights, trademark rights, or any other intellectual property rights of NetApp.

The product described in this manual may be protected by one or more U.S. patents, foreign patents, or pending applications.

Data contained herein pertains to a commercial item (as defined in FAR 2.101) and is proprietary to NetApp, Inc. The U.S. Government has a non-exclusive, non-transferrable, non-sublicensable, worldwide, limited irrevocable license to use the Data only in connection with and in support of the U.S. Government contract under which the Data was delivered. Except as provided herein, the Data may not be used, disclosed, reproduced, modified, performed, or displayed without the prior written approval of NetApp, Inc. United States Government license rights for the Department of Defense are limited to those rights identified in DFARS clause 252.227-7015(b).

Trademark information

NETAPP, the NETAPP logo, and the marks listed on the NetApp Trademarks page are trademarks of NetApp, Inc. Other company and product names may be trademarks of their respective owners.

<http://www.netapp.com/us/legal/netapptmlist.aspx>

How to send comments about documentation and receive update notifications

You can help us to improve the quality of our documentation by sending us your feedback. You can receive automatic notification when production-level (GA/FCS) documentation is initially released or important changes are made to existing production-level documents.

If you have suggestions for improving this document, send us your comments by email.

doccomments@netapp.com

To help us direct your comments to the correct division, include in the subject line the product name, version, and operating system.

If you want to be notified automatically when production-level documentation is released or important changes are made to existing production-level documents, follow Twitter account @NetAppDoc.

You can also contact us in the following ways:

- NetApp, Inc., 1395 Crossman Ave., Sunnyvale, CA 94089 U.S.
- Telephone: +1 (408) 822-6000
- Fax: +1 (408) 822-4501
- Support telephone: +1 (888) 463-8277